

# **RADICAL**

COLLECTION



## Modo Architettura

MODO architettura + design is an established architectural and interior design studio based in Livorno and Milano, created through a collaboration between Sondra Pantani and Pietro Marsili, both graduates in Architecture at the University of Florence.

The Studio deals with all aspects of Architecture and Interior Design, covering each and every aspect of the project: from concept to completion. We exercise our creativity and passion for architectural and interior design introducing new and exciting ideas into a wide range of residential, commercial, hospitality and workplace spaces.

We pay special attention to the details and materials of each project, making sure that our work is original, unique and fitting for each client. We do this by also respecting the surrounding environment and the singularity of each space.

In October 2018, the Studio receives an International Award for Interior Design during the B.I.G. SEE Design Awards in Ljubljana.

Among the various collaborations, MODO has designed various products for international brands currently on sale in the global furniture market.

# RADICAL - 01



EN | ES | FR

Material: 80% Wool +20% Bamboo Silk | 80% Lana + 20% Bambú Seda | 80% Laine NZ + 20% Bambou soïée

System: Hand - kontted 80L | Sistema: Hand-knotted | Système: Hand-knotted 80 L

Height: 0,39 in | Altura: 10 mm | Hauteur: 10 mm

Weight: 13 oz/ft2 | Peso: 4000 gr/m2 | Poids: 4000 gr/m2

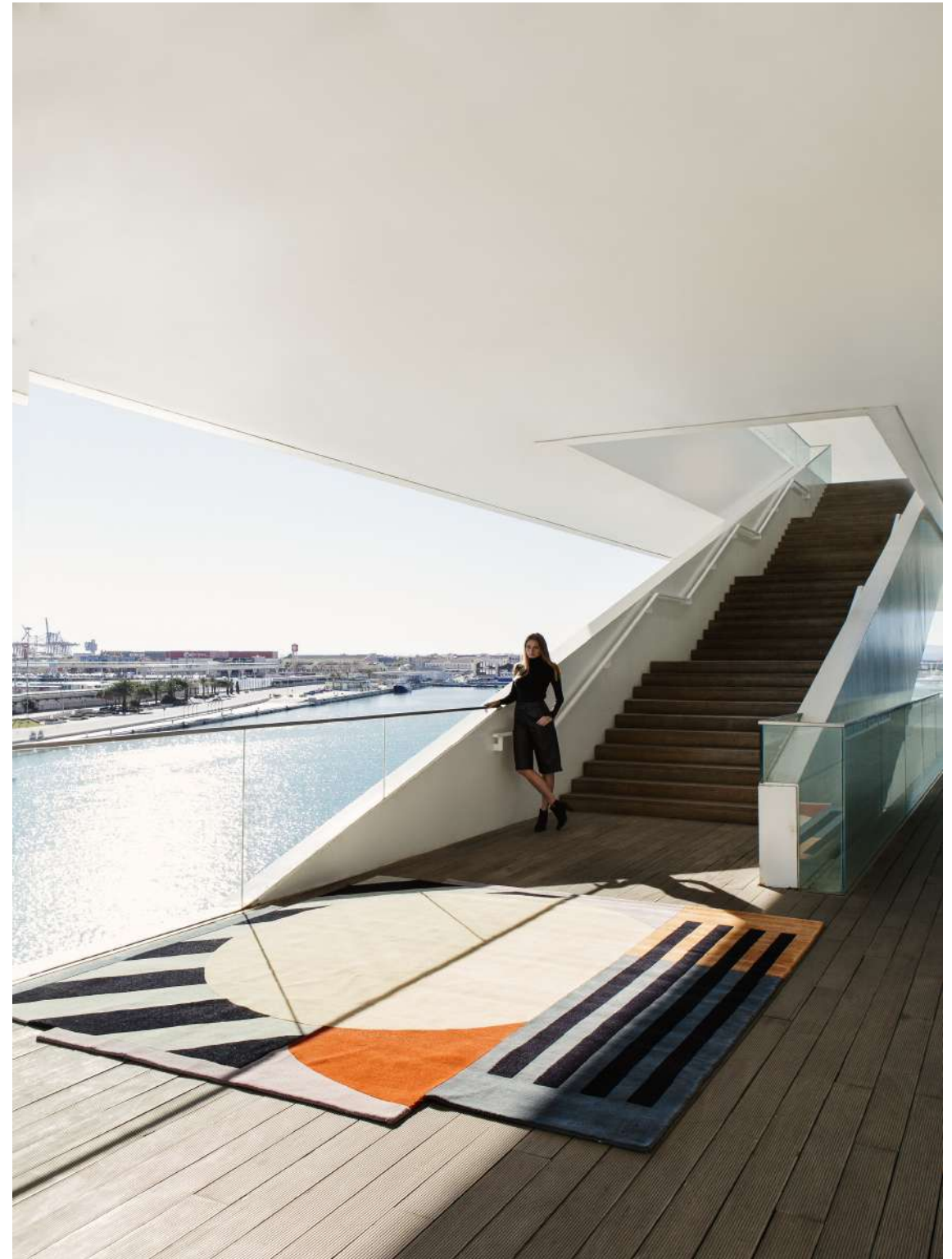
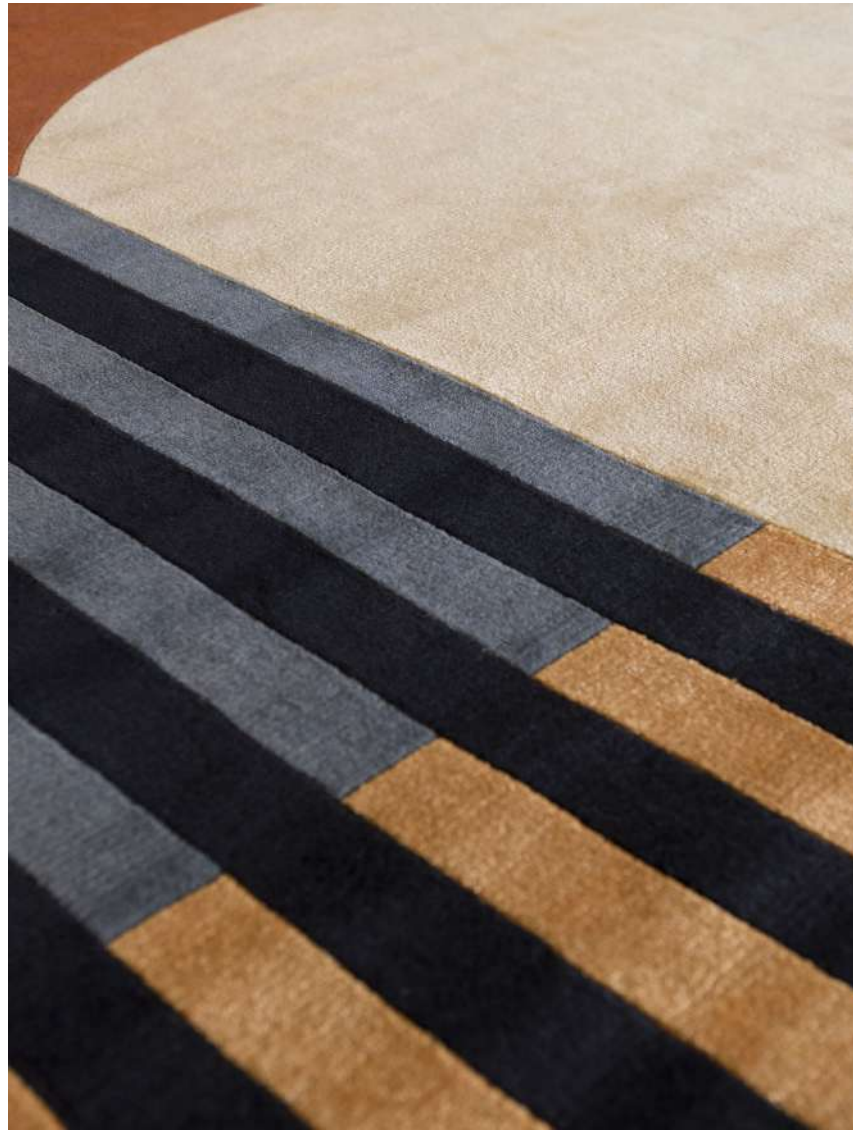
Colours | Colores | Couleurs : 921-970-812-868-890-900-909

Contact us for custom carpets | Para personalizar contáctanos | Pour personnaliser contactez-nous.





# RADICAL - 01



# RADICAL - 02



EN | ES | FR

Material: 80% Wool +20% Bamboo Silk | 80% Lana + 20% Bambú Seda | 80% Laine NZ+ 20% Bambou soïée

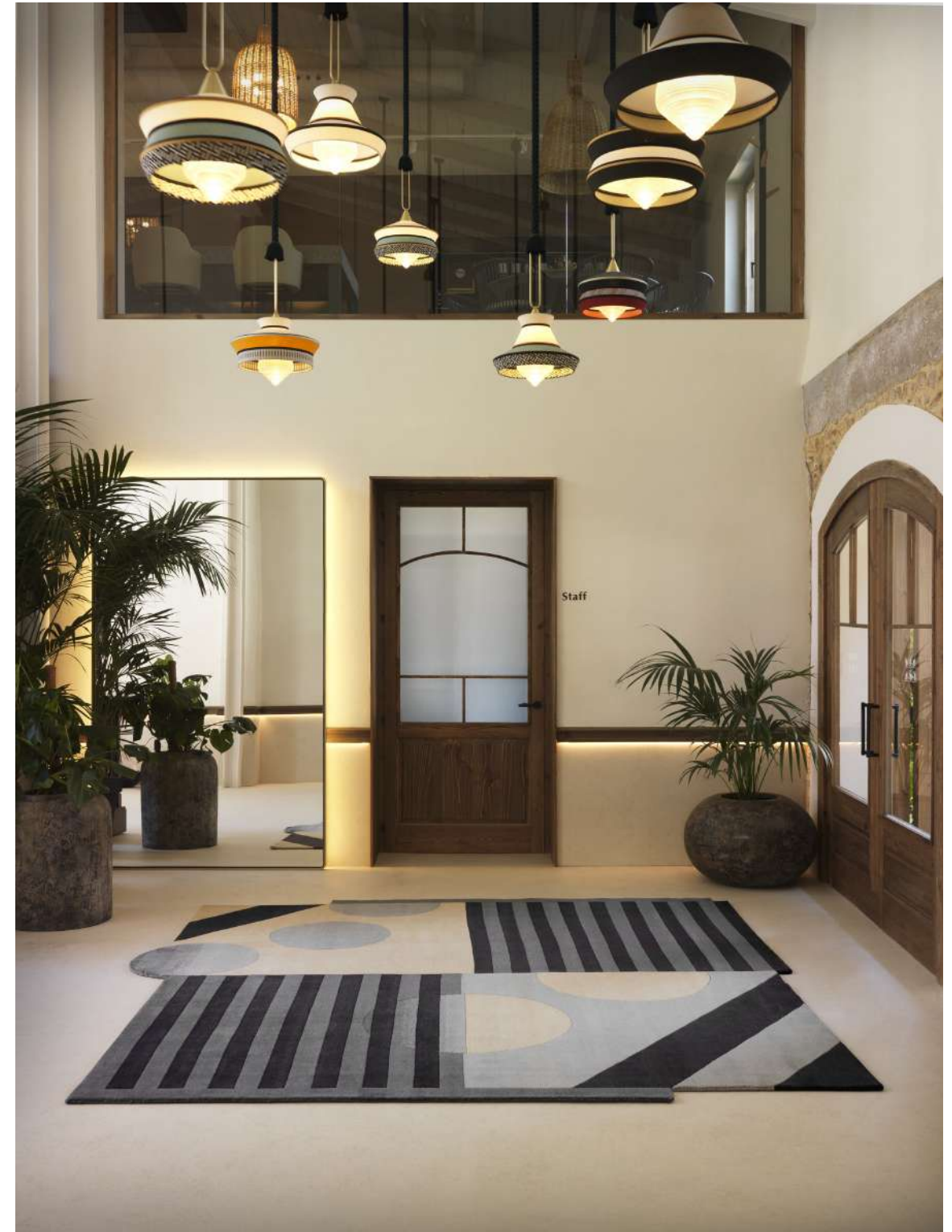
System: Hand - kontted 80 L | Sistema: Hand-knotted | Système: Hand-knotted 80 L

Height: 0,39 in | Altura: 10 mm | Hauteur: 10 mm

Weight: 13 oz/ft2 | Peso: 4000 gr/m2 | Poids: 4000 gr/m2

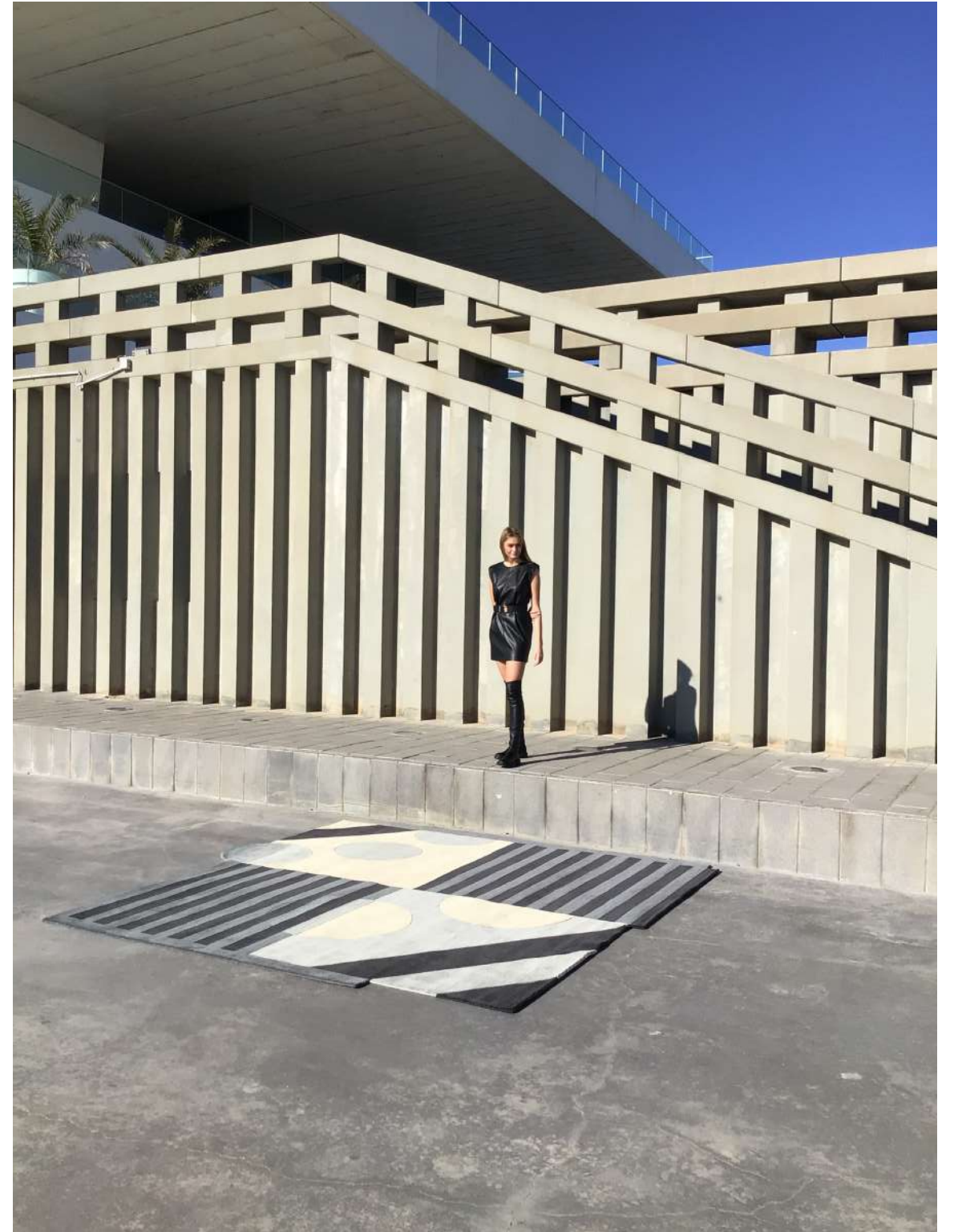
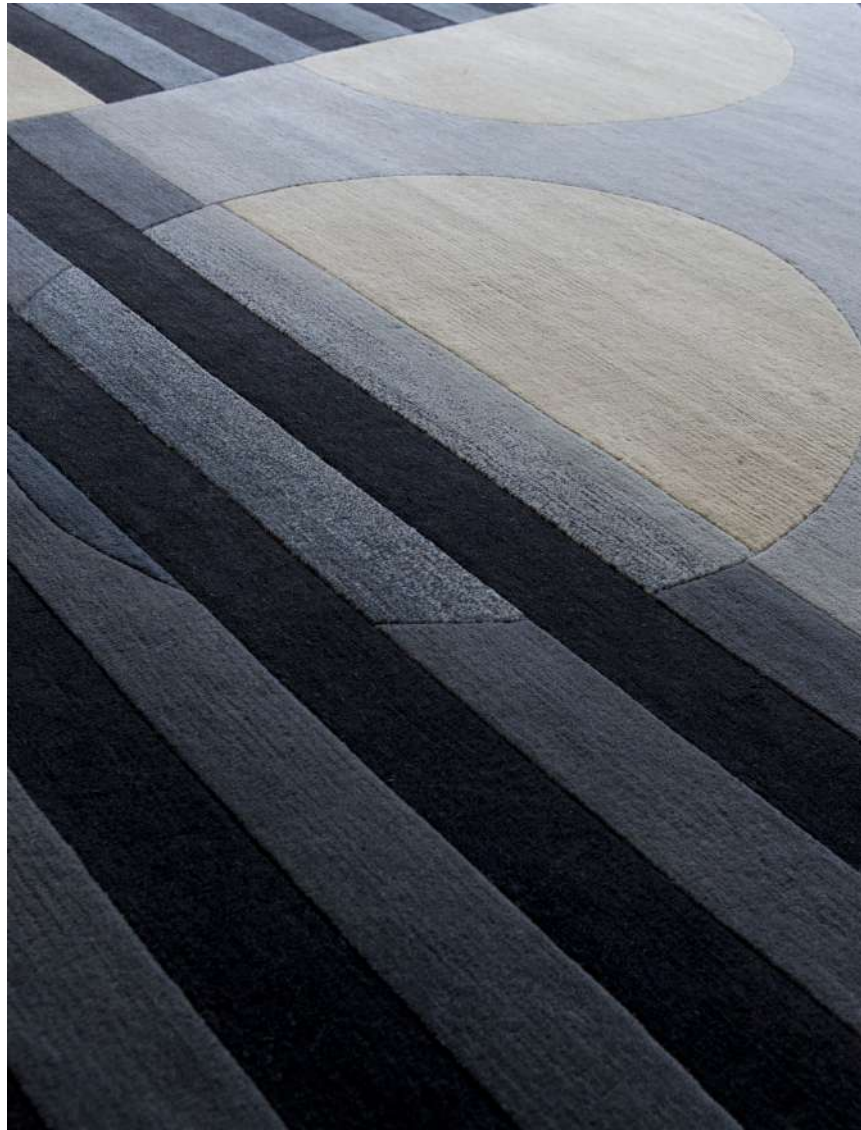
Colours | Colores | Couleurs : 825-909-981-890-870-WHITE 001

Contact us for custom carpets | Para personalizar contáctanos | Pour personnaliser contactez-nous.



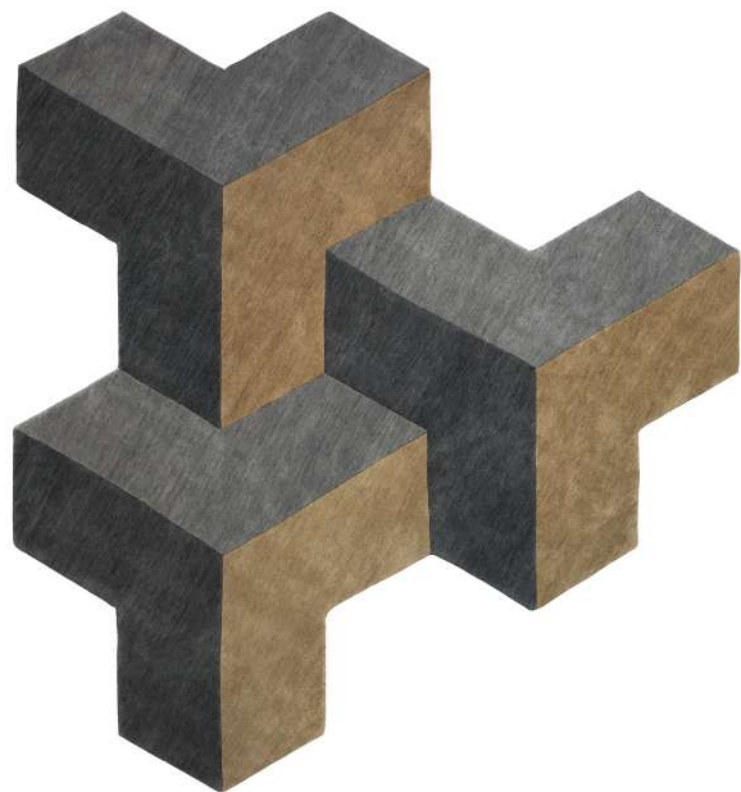


# RADICAL - 02





# RADICAL - 03



EN | ES | FR

Material: 80% Wool NZ | 80% Lana NZ | 80% Laine NZ

System: Hand - tufted 80L | Sistema: Hand - tufted 80L | Système: Hand-spun

Height: 0,47 in | Altura: 12 mm | Hauteur: 12 mm

Weight: 16,35 oz/ft<sup>2</sup> | Peso: 5000 gr/m<sup>2</sup> | Poids: 5000 gr/m<sup>2</sup>

Colours | Colores | Couleurs : 890-889-841

Contact us for custom carpets | Para personalizar contactámanos | Pour personnaliser contactez-nous.



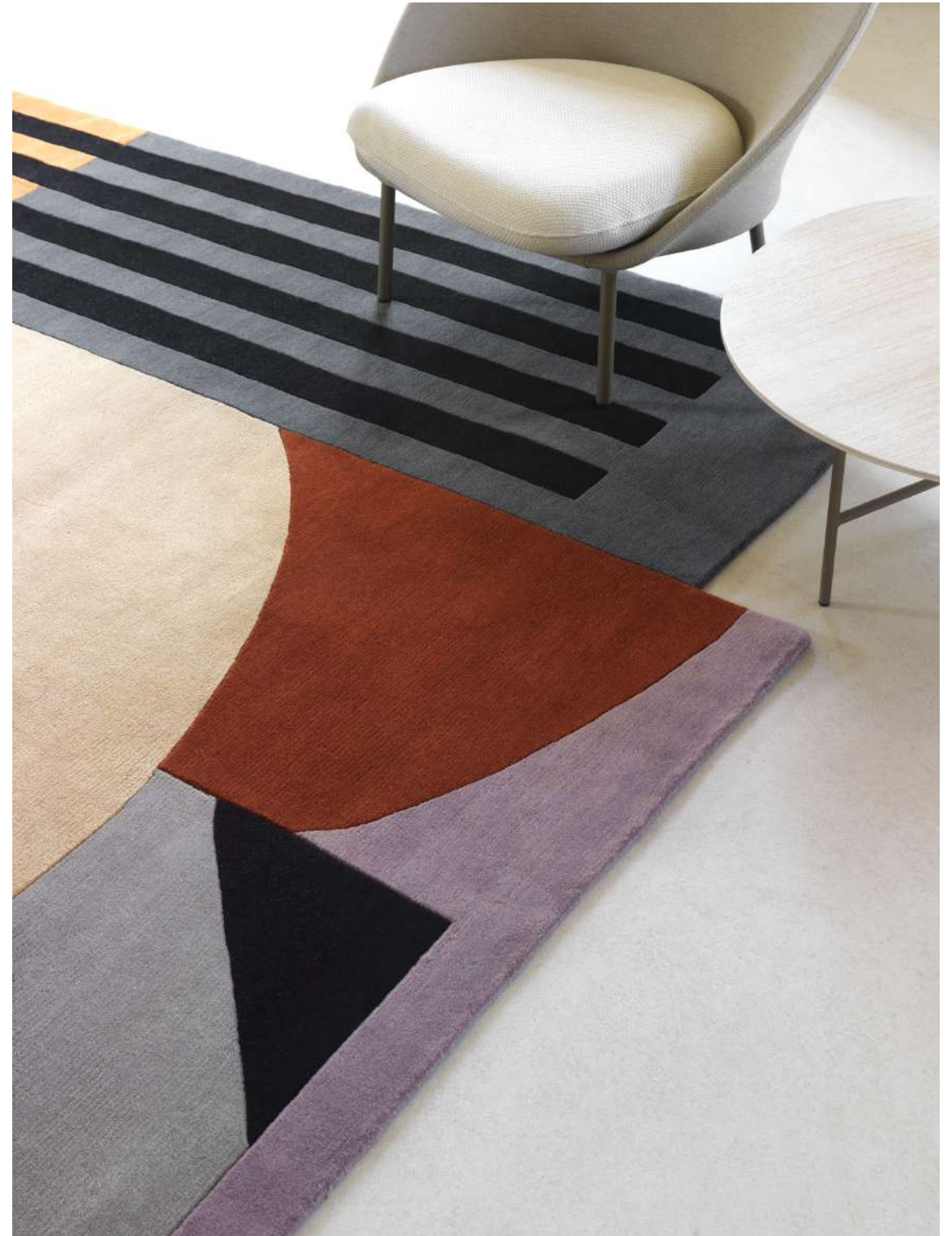


# RADICAL - 03



# CREATING TRENDS...

Contemporary  
Traditional  
Culture





[www.nowcarpets.com](http://www.nowcarpets.com)

NOW CARPETS design inc  
USA: [usa@nowcarpets.com](mailto:usa@nowcarpets.com)  
174 fifth ave. suite 503  
new york NY 10010 (usa)

NOW CARPETS design inc  
USA: [usa@nowcarpets.com](mailto:usa@nowcarpets.com)  
2727 Ponce de León BLVD  
Coral Gables, FL 33134 (usa)

NOW CARPETS design sc  
ESPAÑA: [now@nowcarpets.com](mailto:now@nowcarpets.com)  
pº independencia 8 dup.2ª  
50004 zaragoza (Spain)